

HP77 adjustable single pressure control

Application:

HP77 adjustable single pressure control is used to protect the refrigeration compressor in the refrigeration or air adjustable equipments, to avoid absorbing pressure highest or exhausting pressure lowest. In addition, the control can be used to start or stop the refrigeration compressor and the fan of cold wind condenser.


HP77 adjustable single pressure control is a SPDT switch, the location of switch according can be confirmed according to the setting of control and the pressure of connector. It can not only be used in chlorine freon as the cold -producing medium, but also used in air and liquid (liquid temperature: $-40^{\circ}\text{C}\sim+135^{\circ}\text{C}$)

Characteristic

A short flicker time will fall abrasion to least, which will improve the life of control.

Against to abrasion and impulsion, repeatability: $\leq 1.5\%$; Environment temperature: $\leq 85^{\circ}\text{C}$

Adjustable pressure control and automatically return.

The micro switch is made by CHERRY and has follow standards: 

High precision differential pressure control for different type.

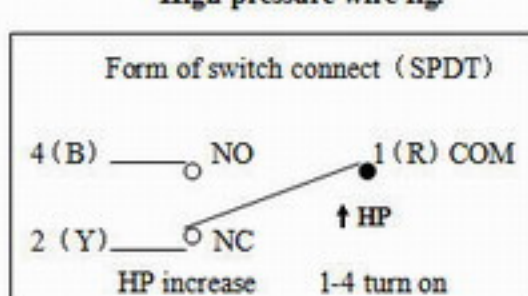
Provide you with accessories for installation.

Stainless steel shell and engineering plastic upper cover.

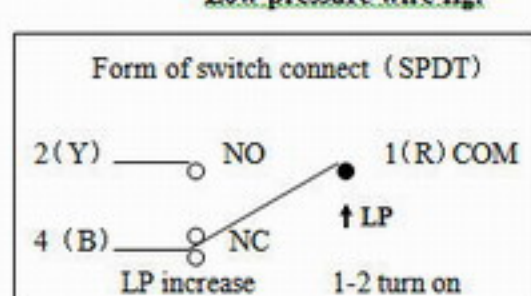
Electric parameter:

Switch connection ratings: 5amp 125/250VAC, 1/4H.P, 125VAC Fine Silver Contacts.

High pressure wire fig.



Low pressure wire fig.

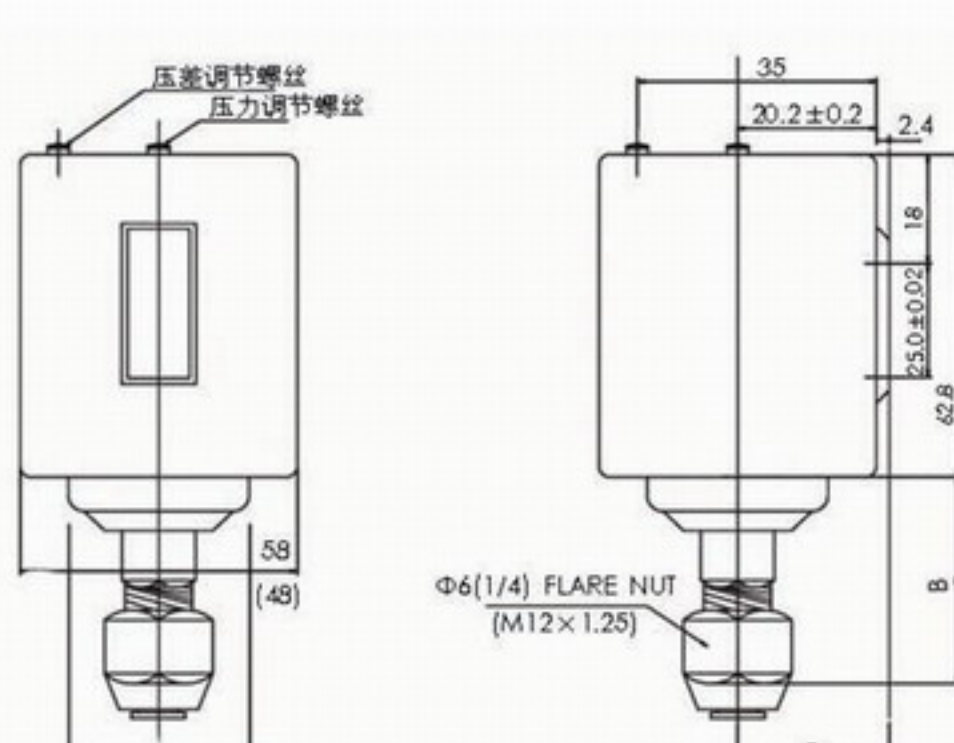


"1" connector—red line "2"connector—yellow line "4"connector—blue line

Specification:

Pressure	Type	Low pressure (LP)		High pressure (HP)		return		Contact system
		Range	Differential pressure Δp	Range	Differential pressure Δp	Low pressure LP	High pressure HP	
LP	HP77A	-0.7~3	0.7~2			automatic		SPDT
LP	HP77B	-0.7~6	0.7~4			automatic		
LP	HP77C	1~10	1~3			automatic		
LP	HP77D	0.2~0.6	Fixed 0.02			automatic		
HP	HP77E			5~16	1~4		automatic	
HP	HP77F			5~24	2~5		automatic	
HP	HP77G			5~30	5~10		automatic	
HP	HP77H			1~35	5~10		automatic	
HP	HP77I			2~12	Fixed 3~4		automatic	
HP	HP77J			5~30	Fixed 3~4		automatic	

Appearance fig.



Model No.	A	B	C
Low pressure	35	36	224
High pressure	22	32.7	18.5

Connection and installation:

Connection:

Here are two mode:

one mode is to screw the nut of the control with a outside micrometer of $\Phi 6 \times 1$ red copper pipe () at the horn where the pipe extend to 90°

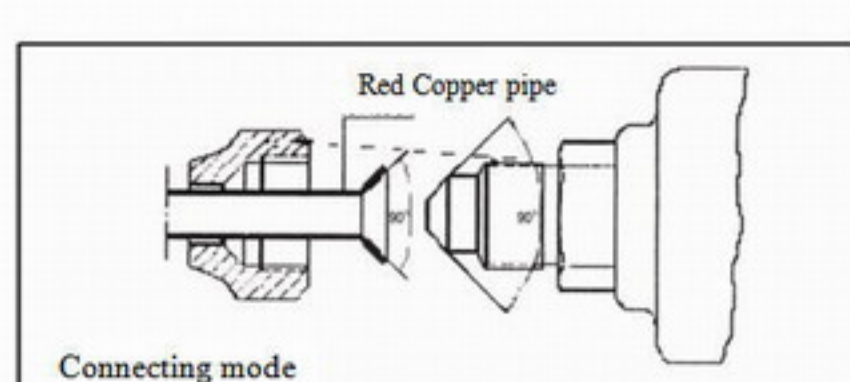
Another mode is connect the control with the capillary at the outside micrometer of $\Phi 3$, long for 1m. (The mode should be referred before order), the detail information shown in fig.

Installation:

Here are two mode:

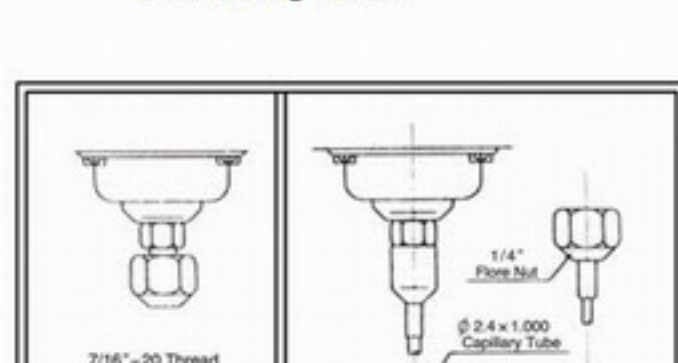
One mode is to install with the 4.M4 tap hole behind the control.

Another mode is to use the all-purpose installation accessory (see the shown fig.)



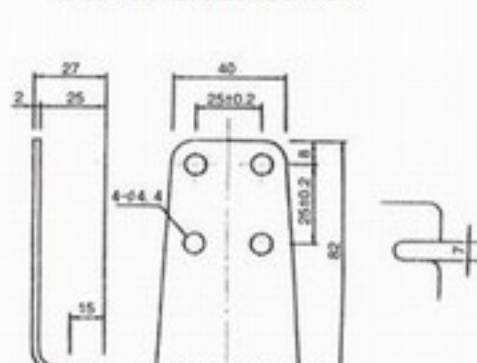
Connecting mode

Size for accessories



Standard

Special requirements



Operational description:

Installation:

- If it is connected in the capillary mode, avoid turning or twisting of the capillary
- If the controller is used in the refrigerating system with ammonia as the medium, controller should be made of stainless steel bellows

- Before connecting with the controller, ensure all the pipelines are clean.
- Don't install the controller in any equipment with the workload exceeding the rated value of its appliances.
- The ultra long capillary must be coiled and fixed appropriately in order to prevent the vibration. The capillary is permitted to be little relaxed, to prevent the capillary from cracked due to the violent vibration.
- When the pipes are connected, two pieces of 10in wrenches must be used simultaneously on the nut of the controller and the connector to make it tight, to avoid destroying the components of the controller.

Wiring: when preparing wire, ensure to cut off the power supply for preventing electric shock and damage of the equipment.

Adjusting: when moving the adjustable knob clockwise, the value of differential pressure will fall. Otherwise, the value will rise.